

IMPLEMENTATION

Priority projects

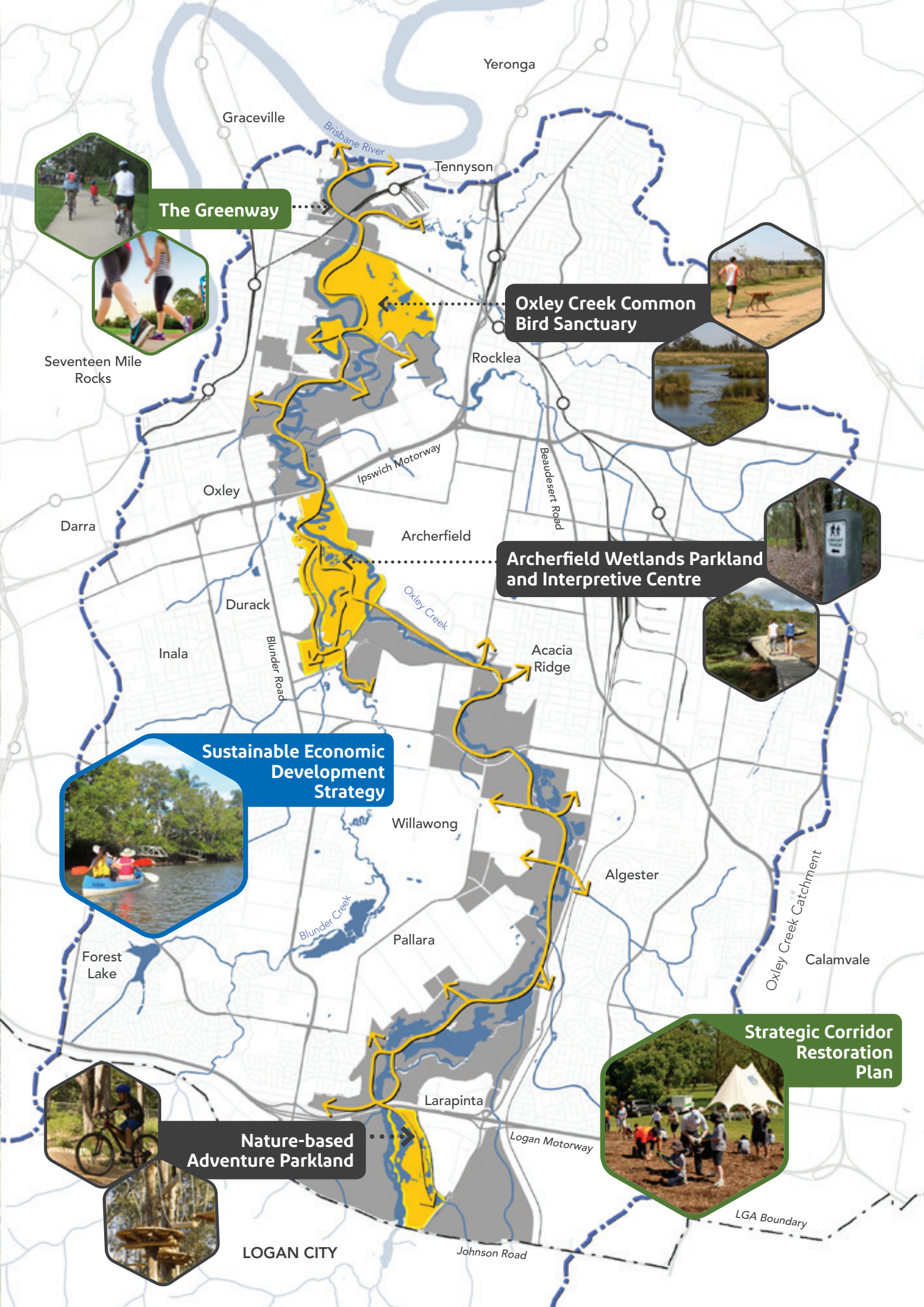
Six of the 13 strategic ideas presented in the Master Plan have been selected as priority projects and a focus for investment over the short to medium-term.

Projects have been selected for their ability to stimulate investment, catalyse development, engage the community and deliver environmental benefits. All require significant investment. Collectively, they will deliver the foundational elements of the future parkland.

The following section outlines each of the six priority projects in detail.

Oxley Creek Transformation will also work with key stakeholders to deliver smaller, complementary projects and initiatives.





The Greenway

Oxley Creek Common Bird Sanctuary

Archerfield Wetlands Parkland and Interpretive Centre

Sustainable Economic Development Strategy

Strategic Corridor Restoration Plan

Nature-based Adventure Parkland

IMPLEMENTATION

The Greenway

Choose your own adventure

Wander shady paths through eucalypt forests, stroll along boardwalks that cross wetlands brimming with birdlife, go frog spotting around still ponds or work up a sweat hiking bush circuits on The Greenway.

Stretching from the Brisbane River 20 kilometres to Larapinta, The Greenway is destined to become one of Brisbane's most popular walking and recreational cycling trails and a tourism icon for the city.

Largely following Oxley Creek for its entire route, The Greenway will take walkers and cyclists through many different landscapes from serene wetland parks to open grasslands, untouched bushland pockets and small recreational hubs hosting ecotourism activities and community events. The trail will combine a mix of paved and bush paths, boardwalks and bridle trails.

The Greenway will become the central spine for moving through the Oxley Creek corridor, acting as the unifying physical element for all destinations. It will also provide easy access to side trails for bushwalking, birdwatching and horse riding and link into broader local walking and cycling networks.

Embellished with public artwork and interpretive signage, The Greenway will contain the essential wayfinding tools and information that visitors need to navigate the entire parkland. Traversing it will become the defining experience of visiting Oxley Creek.

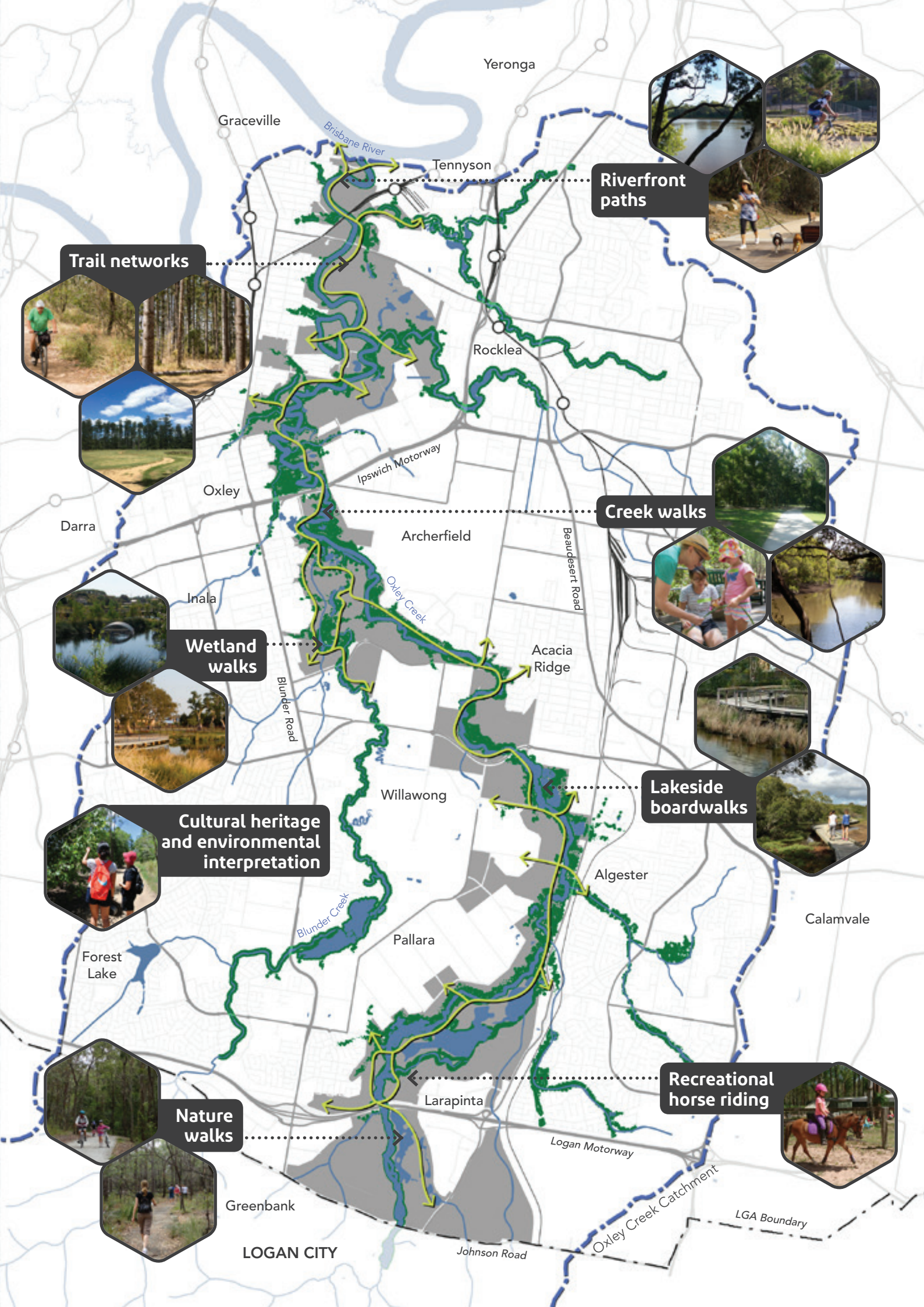
The Greenway will:

- be a multi-experience regional walking and recreational cycling trail
- connect recreation, community and commercial hubs throughout the corridor
- link with broader walking and cycling networks to connect local destinations and places
- connect people with water and nature
- provide educational experiences and interpretation of the corridor's natural ecology and cultural heritage
- provide opportunities for recreational horse riding
- provide active transport connections between adjoining suburbs and the wider active transport network, improving the safety of walkers, joggers and cyclists

- be delivered on parcels of land owned by Council or through collaboration with property owners
- include creek crossings such as causeways and bridges allowing connections from adjoining suburbs
- provide separated path facilities for pedestrians and cyclists in areas of high use
- provide sections of pathway for all abilities access
- contribute to Council's 50% shade coverage target for footpaths/bikeways in residential areas by 2031.

Project timing





Yeronga

Graceville

Brisbane River

Tennyson

Riverfront paths

Trail networks

Rocklea

Ipswich Motorway

Oxley

Creek walks

Darra

Archerfield

Beaudesert Road

Wetland walks

Inala

Acacia Ridge

Blunder Road

Lakeside boardwalks

Willawong

Cultural heritage and environmental interpretation

Algester

Calamvale

Forest Lake

Blunder Creek

Pallara

Recreational horse riding

Larapinta

Logan Motorway

Nature walks

Greenbank

LOGAN CITY

Johnson Road

Oxley Creek Catchment

LGA Boundary

IMPLEMENTATION

Oxley Creek Common Bird Sanctuary

Discover birds in the wild

Scan the air for the white-bellied sea-eagle, peek through swaying grasses for a yellow-rumped thornbill, single out the striped honeyeater nesting in the hoop pines and pause at the lookout for the lilting call of the mangrove gerygone. It's a birdwatching paradise at the Common.

Already one of Brisbane's best birding spots, Oxley Creek Common has the potential to become a world-renowned birdwatching destination, drawing birders, ornithologists and nature lovers from across the nation and globe.

Despite the Common's urban location just seven kilometres from the CBD, one quarter of Australia's native bird species have been spotted onsite, along with migratory birds from as far away as Japan and Russia. The large open space hosts significant wetlands and is bounded on two sides by Oxley and Stable Swamp Creeks, which together provide habitat for diverse bird species.

Future investment will focus on enhancing and expanding this habitat to attract more native fauna species, particularly birds, and support a richer array of flora. The Common will become a place where visitors and locals can learn about biodiversity, sustainability and ornithology and enjoy the natural world.

Opportunities to collaborate with Corinda State High School's current on site agricultural program will also be investigated.

Proposed facilities include:

- a visitor centre
- urban farming and commercial activities
- linkages with cafes, markets and food and beverage outlets in close proximity
- birdwatching infrastructure including bird hides, lookout towers and boardwalks
- a community lease facility, for activities that are complementary to the site and corridor values, e.g. research facility, educational space, urban farm, native plant nursery
- engineered habitats such as forests, wetlands, lagoons and islands (in locations where the existing landform has already been modified)
- upgraded walking tracks and facilities along Oxley Creek and through the Common
- shared paths through the Common connecting northern and southern sections of the corridor
- enhancements to the Red Shed (which currently includes toilets, drinking water, covered seating and barbeque facilities) including potential upgrades to the canoe and kayak launching facilities
- investigate bike, canoe and kayak hire facilities
- a community area inclusive of an event/activity lawn, children's play area, all ages outdoor gym and a fenced dog off-leash area.

Oxley Creek Common Bird Sanctuary will be created in partnership with the Friends of Oxley Creek Common, OCCA, Corinda State High School, Birds Queensland, Queensland Government and Council.

Project timing





Notes:

- The land associated with the Oxley Creek Common is owned by the Queensland Government. These ideas for improvements to Oxley Creek Common, and the conceptual map, are part of a holistic corridor planning process undertaken by Oxley Creek Transformation. These ideas are indicative, providing a starting point for further discussions with relevant stakeholders and land custodians on integrating the Oxley Creek Common into the overall recreation and environmental corridor initiative.
- Images are artist's impressions and highly conceptual. They describe general intents for the locations shown. The outcomes are not necessarily representative of specific future improvements. Further planning, technical studies and consultation will be required in order to determine final uses and physical outcomes.

IMPLEMENTATION

Archerfield Wetlands Parkland and Interpretive Centre

Let nature restore your soul

Throw a picnic blanket beside the lagoon, turn off your phone, relax and connect with friends at the Archerfield Wetlands event and activity lawn.

Once an industrial precinct, a site for wastewater treatment and waste disposal, and a source of pollution for Oxley Creek, Archerfield Wetlands is being given back to nature and rehabilitated into an environmental asset and a recreational destination.

Restoration of natural ecosystems will intensify across the site to expand and complement the existing wetland, which is already a valuable component of the regional ecosystem.

Proposed ecological and biodiversity initiatives include:

- expanding the existing wetland and revegetating and stabilising creek banks to re-establish natural cleansing systems and improve water quality and aquatic habitat
- reinstating wildlife movement corridors between sub-catchments and habitat enhancement
- remediating existing contaminated land north of the wetlands.

With a new visitor centre and community hub also planned on the former treatment plant site, Archerfield Wetlands and the surrounding remnant pastoral lands will become a major new recreation, education and environmental parkland for the region.

Proposed features of the new parkland include:

- an event and activity lawn with a multifunctional performance space
- picnicking, sports and non-motorised watercraft launching facilities
- a network of walking, heritage and birdwatching trails that connect lookout towers, public artworks and interpretive cultural experiences and a link to The Greenway
- nature-based or natural-setting economic activities.

The decommissioned Inala Wastewater Treatment Plant, located on the south-western edge of the wetlands, will be repurposed as a major hub for the Oxley Creek corridor hosting community, educational and commercial functions.

Key opportunities include:

- a visitor centre offering educational, interpretive and community experiences
- a play space and youth hub utilising old plant infrastructure for creative play and sport
- a community hub for local environmental and cultural groups
- commercial activities leveraging the facility's visitor, playscape and environmental features.

Further development of these outcomes will need to consider the compatibility with existing surrounding land uses such as Archerfield Airport and residential communities to the west.

Project timing





Entry with signage

Ipswich Motorway

Upgraded bridge underpass for pedestrians and cyclists

Sports fields and community facility

The Greenway

Oxley Creek

Non-motorised watercraft launching facility

Multipurpose trails and circuits for walking, cycling and horse riding

Remediated wetlands and grasslands

Lookout tower

Lookout tower

Artwork follies and land art opportunities in key locations

Blunder Road

Event and activity lawn

Non-motorised watercraft launching facility

Oxley Creek

Wetland walkway

Multifunctional performance space

New community and commercial hub at the decommissioned Inala Wastewater Treatment Plant

Play space and youth hub

Bowhill Road

Stormwater polishing wetlands

Entry with signage

Blunder Creek

Note:
Images are artist's impressions and highly conceptual. They describe general intents for the locations shown. The outcomes are not necessarily representative of specific future improvements. Further planning, technical studies and consultation will be required in order to determine final uses and physical outcomes.

IMPLEMENTATION

Nature-based Adventure Parkland

Get outdoors and get active

Cycle, paddle, explore and enjoy the outdoors at the nature-based adventure parkland in one of the corridor's southern-most reserves.

The new Nature-based Adventure Parkland in Larapinta will have plenty to fire the imagination, with creative play spaces for children and new bushwalking, birdwatching, canoeing and picnicking facilities planned.

The existing bushland reserve, a mostly natural area containing a series of picturesque lakes, will be expanded into a regional parkland.

Proposed facilities include:

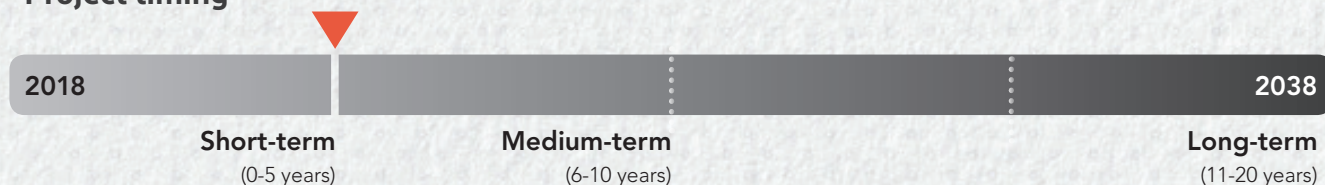
- nature-based adventure play areas, incorporating elements such as climbing rocks, forts, rope challenges, balance logs and bush areas for exploring
- lakeside boardwalks
- non-motorised watercraft launching facilities
- picnic areas
- a visitor and/or community centre offering educational and interpretive experiences as well as a point for community interaction and inclusion
- multipurpose trails and circuits, connecting the parkland to The Greenway and adjoining bushland reserves, for walking, off-road cycling and horse riding opportunities
- bike, canoe and kayak hire facilities.

Opportunity also exists for a complementary outdoor adventure recreation or ecotourism business to operate within the reserve, sensitively leveraging the location's current and future assets. This hub would act as the key southern gateway to the Oxley Creek corridor, linked to northern hubs via The Greenway.

The reserve is part of the Flinders (Greenbank) Karawatha Corridor, the largest remaining continuous stretch of open eucalypt forest in South East Queensland. Its forests and lakes host threatened ecosystems and provide habitat for wildlife such as gliders, koalas and more than 100 bird species, offering the perfect setting for learning and connecting with nature.

This parkland project was first proposed as part of the Council's *Oxley Creek to Karawatha Outdoor Recreation Concept Plan* (Recreation Plan). Oxley Creek Transformation has taken the ideas suggested in the Recreation Plan and will continue to develop them into an outcome that aligns with both the Oxley Creek Transformation vision and the Recreation Plan.

Project timing





Upgraded bridge underpass for pedestrians and cyclists

Logan Motorway

The Greenway

Lakeside bird hides

Oxley Creek

Buoys restricting watercraft access

Non-motorised watercraft

Picnic areas

Outdoor adventure recreation or ecotourism facility

Visitor centre and/or community centre

Non-motorised watercraft launching facility

Existing stormwater polishing wetlands

Wetland bird hides

Multipurpose trails and circuits for walking, cycling and horse riding

Event and activity lawn

Picnic areas and nature-based play

Picnic areas

Lakeside boardwalks

Entry with signage

Paradise Road

Note:
Images are artist's impressions and highly conceptual. They describe general intents for the locations shown. The outcomes are not necessarily representative of specific future improvements. Further planning, technical studies and consultation will be required in order to determine final uses and physical outcomes.

Strategic Corridor Restoration Plan

Chart a course for environmental success

Grab your gardening gloves and help local community groups rejuvenate Oxley Creek's patchwork of remnant vegetation into a biodiverse ecological corridor for the city.

The Strategic Corridor Restoration Plan (Restoration Plan) will direct rehabilitation efforts within the Oxley Creek corridor to ensure a holistic approach that maximises environmental benefits across the whole corridor.

The Restoration Plan will draw together the Master Plan's key environmental strategies into a single, ongoing and long-term major initiative.

Key environmental strategies covered by the Restoration Plan will include:

- waterway and bushland restoration
- re-establishment of national, state and citywide significant vegetation communities
- re-establishment of natural habitat and habitat connections
- contaminated site rehabilitation works
- stormwater management and treatment
- planning for ongoing maintenance of improved lands
- baselines and review points for measuring progress.

As a 'living' document, the Restoration Plan will set out prioritised upgrades and enhancements to waterways and key habitat areas, allowing for changes to priorities over time as initiatives are completed and new issues or opportunities arise.

Improvements delivered under the Restoration Plan will be undertaken by multiple stakeholders, including:

- Oxley Creek Transformation
- Brisbane City Council
- land owners and developers
- environmental groups.

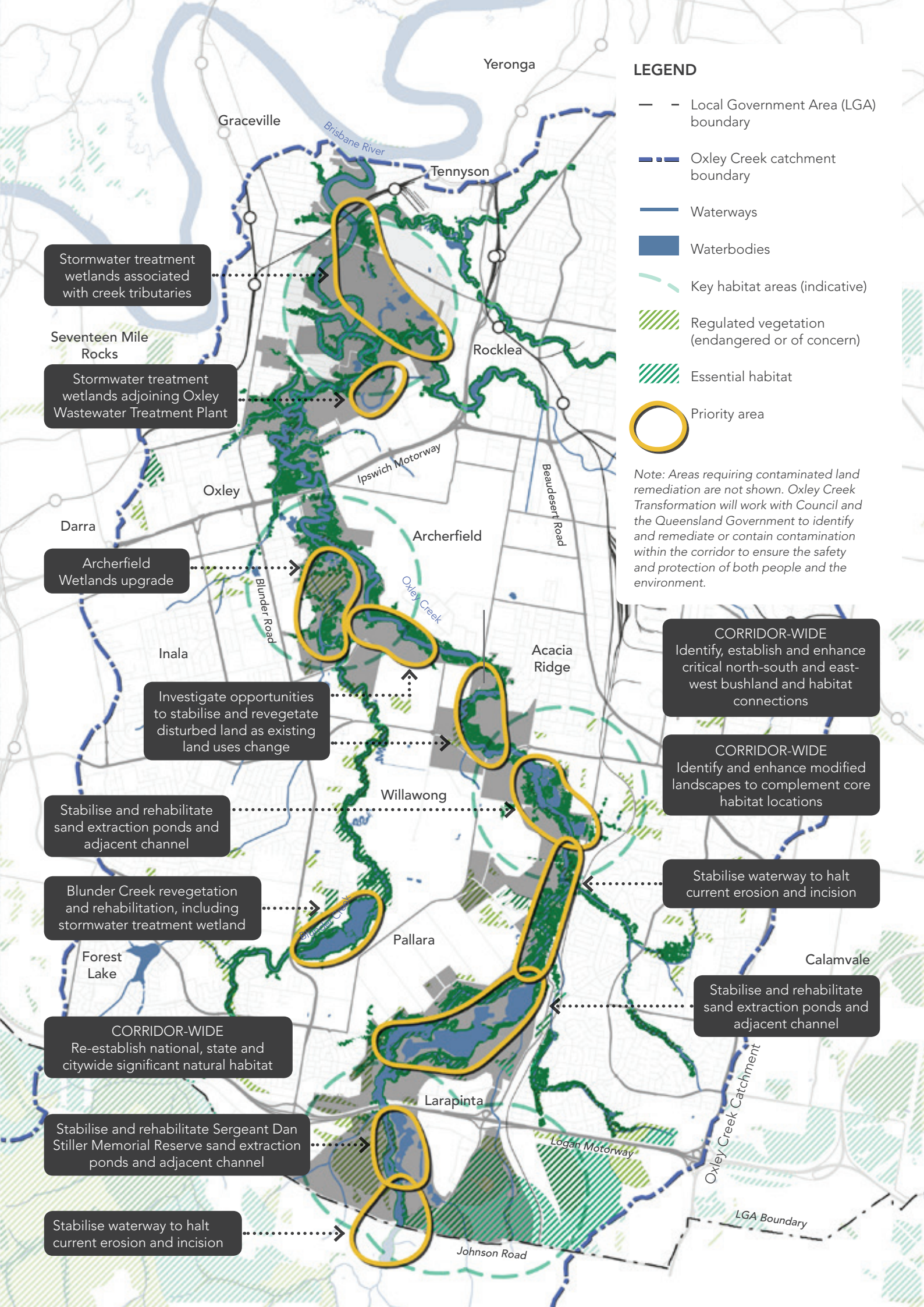
Community-based environmental groups and volunteers have been instrumental in revitalising degraded parks, bushland and waterways throughout the corridor. Volunteers have worked tirelessly for decades to bring life back to the catchment. Delivering the Restoration Plan successfully will be reliant on the continued involvement of already active environmental groups and volunteers.

Oxley Creek Transformation will support existing community efforts and new initiatives that enable community groups, schools and non-profit organisations to deliver practical, on-ground environmental restoration projects (both bushland and waterway) that harmonise with the direction set by the Restoration Plan.

Oxley Creek Transformation support will include the provision of a facility for OCCA to base their operations.

Project timing





Sustainable Economic Development Strategy

Laying the foundation for prosperity

Explore the bush on horseback, browse upcycled wares by local artisans or enjoy specialty coffee with a bushland view. Head to Oxley Creek to enjoy ecotourism destinations and environmentally friendly businesses...it may even inspire the green entrepreneur in you!

Environmentally friendly economic hubs within, and along the edge of, the Oxley Creek corridor will help fund its ongoing transformation.

Converting the corridor from a collection of grassy paddocks, quiet playgrounds, unkept green spaces, pocket parks, open wetlands and a string of former industrial sites into a vast multi-use parkland set to rival the world's best urban spaces requires significant upfront construction funding and ongoing maintenance and management funds. While Council has made a considerable investment in a strong parkland framework for Oxley Creek, additional funding streams will be required to grow and maintain the future parkland.

Economic hubs, known as 'destination hubs' or 'parkland edges', will leverage natural attractions that inject vitality and draw investment to the area.

Up to five percent of the Oxley Creek corridor will host commercial activities and opportunities to generate revenue to fund park maintenance, new green infrastructure and regeneration projects.

'Destination hubs' will focus on recreation and business operations that are sensitive to the natural setting and complement existing land uses, such as education facilities, casual food experiences and nature-based tourism. Destination Hubs will utilise both flood-prone and flood-immune locations.

'Parkland edges' will redevelop land adjoining the corridor into primary revenue generators, such as clean industry business precincts. These redevelopments will also provide the opportunity to increase the green corridor through land dedications. Development will align with the vision established by Council's neighbourhood plans for future development and the evolution of local neighbourhoods.

Oxley Creek Transformation will establish and manage destination hubs and parkland edges, prioritising revenue-generating sustainable investment outcomes. Revenue derived from long-term leases and commercial ventures will be invested back into the corridor to fund park maintenance, new green infrastructure and regeneration projects.

The Sustainable Economic Development Strategy will focus on:

- **Activation and recreation opportunities:** Opportunities for free and user-pays recreation activities will be identified, assisted by engagement with adventure, tourism and recreation markets.
- **Investment attraction:** Private investment partners will help expand the corridor's recreation mix. Expressions of interest will be sought for commercial operations and partnerships that entice locals and visitors to gather, socialise, relax, play and connect with nature, while minimising environmental impacts.
- **Tourism opportunities:** Domestic tourists accounted for more than 90% of visits to Australian nature reserves and conservation parks in 2017. Oxley Creek's collection of green spaces and waterbodies has untapped potential to become a unique tourism offering for Brisbane.
- **Corridor partnerships:** Partnering with existing and future corridor neighbours holds great potential to improve waterways and green spaces and activate corridor edges. Possible partnerships will be investigated to identify complementary land uses and activities that could come together for mutual benefit.

Project timing



